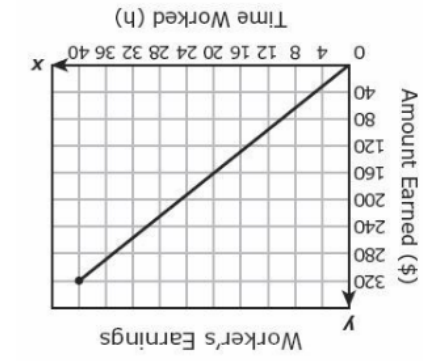
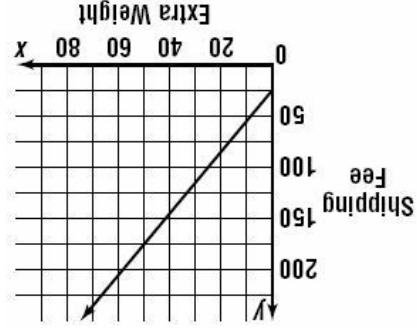


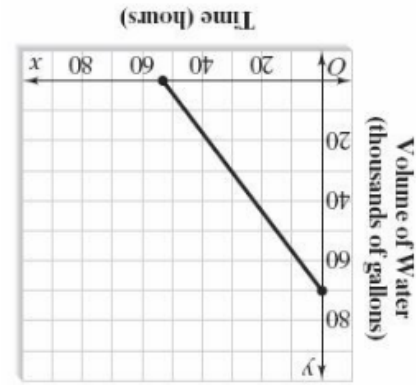
# CALCULATING RATE OF CHANGE FROM A GRAPH



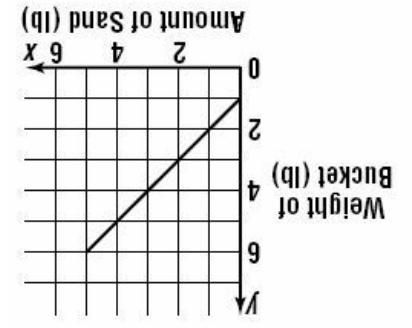
Calculate the rate of change.



Calculate the rate of change.

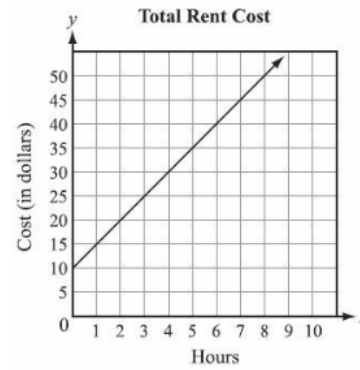


Calculate the rate of change.

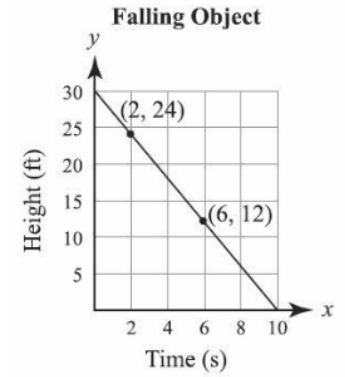


Calculate the rate of change.

Calculate the rate of change.



Calculate the rate of change.



CFS:

1. Identify two points on the line
2. Label slope triangle correctly
2. Calculate ROC/Slope in context